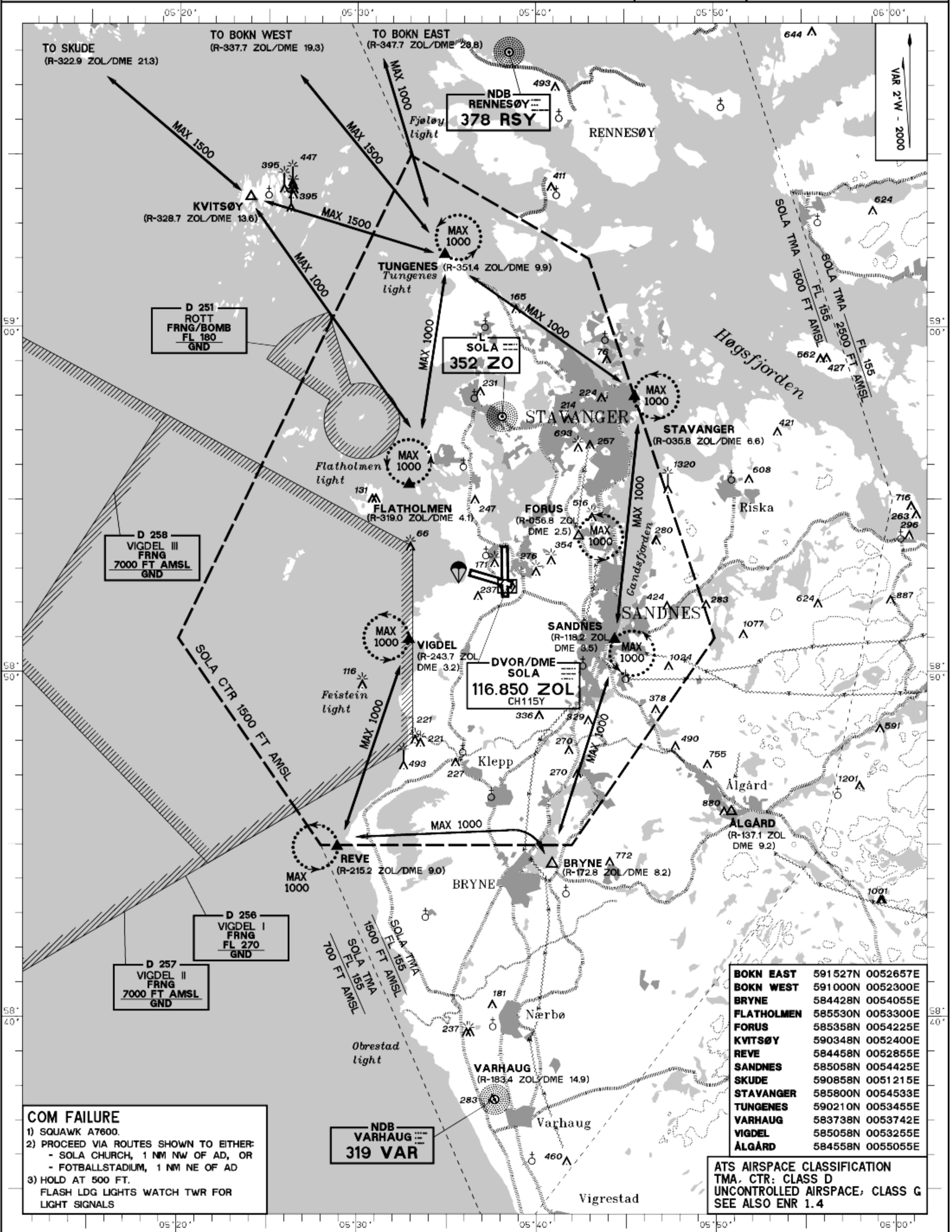


<b>VFR - ROUTES LIGHT AIRCRAFT</b>	<b>ELEV AND ALT IN FEET</b> OBST LESS THAN 100 FT AGL NORMALLY NOT SHOWN	TWR 118.350	APP/TAR 118.500	ATIS 126.000	<b>STAVANGER SOLA NORWAY</b>
SCALE 1:275000		122.100	119.400	GND	
		119.600	121.750	VDF	
			122.100	ALL FREQ	



Permission LE2 - 2346 Norwegian Mapping Authority

**COM FAILURE**  
 1) SQUAWK A7600.  
 2) PROCEED VIA ROUTES SHOWN TO EITHER:  
 - SOLA CHURCH, 1 NM NW OF AD, OR  
 - FOTBALLSTADIUM, 1 NM NE OF AD  
 3) HOLD AT 500 FT.  
 FLASH LDG LIGHTS WATCH TWR FOR  
 LIGHT SIGNALS

BOKN EAST	591527N	0052657E
BOKN WEST	591000N	0052300E
BRYNE	584428N	0054055E
FLATHOLMEN	585530N	0053300E
FORUS	585358N	0054225E
KVITSØY	590348N	0052400E
REVE	584458N	0052855E
SANDNES	585058N	0054425E
SKUDE	590858N	0051215E
STAVANGER	585800N	0054533E
TUNGENES	590210N	0053455E
VARHAUG	583738N	0053742E
VIGDEL	585058N	0053255E
ALGÅRD	584558N	0055055E

**ATS AIRSPACE CLASSIFICATION**  
 TMA, CTR: CLASS D  
 UNCONTROLLED AIRSPACE, CLASS G  
 SEE ALSO ENR 1.4