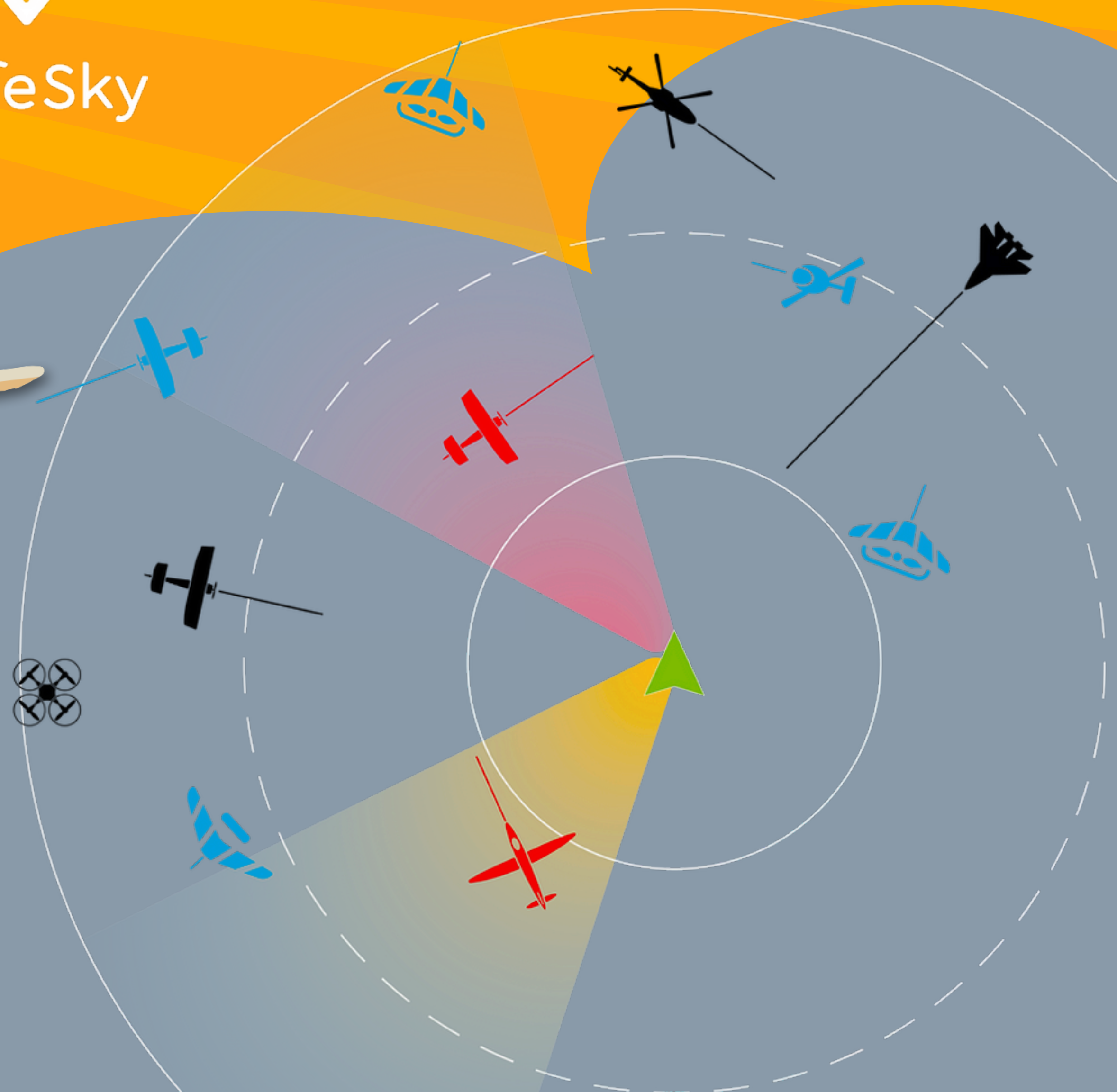
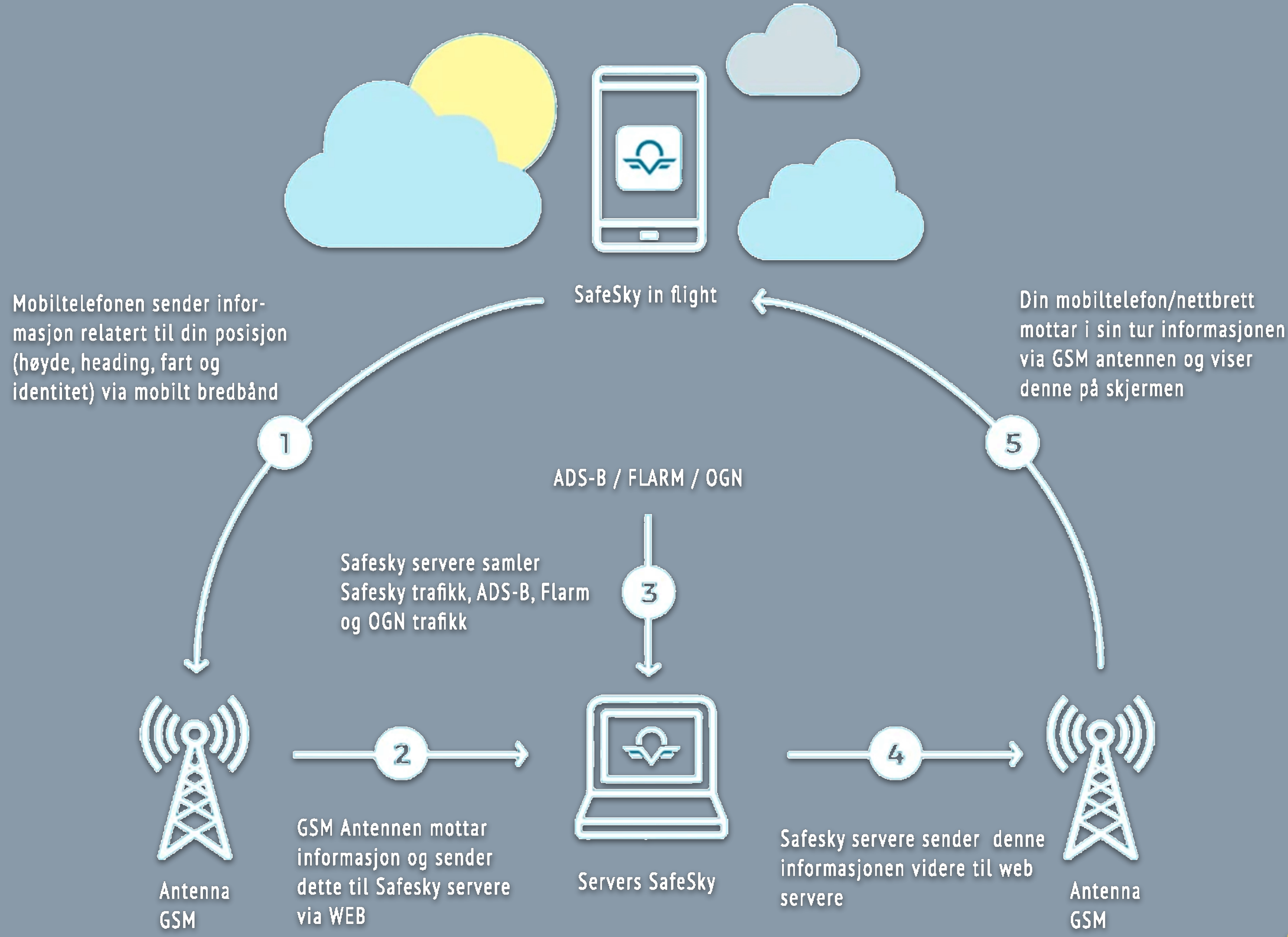


SkyDemon + SafeSky



Making the Invisible **VISIBLE**  
in-flight traffic information solution

# Funksjonalitet



## Kompatibilitet

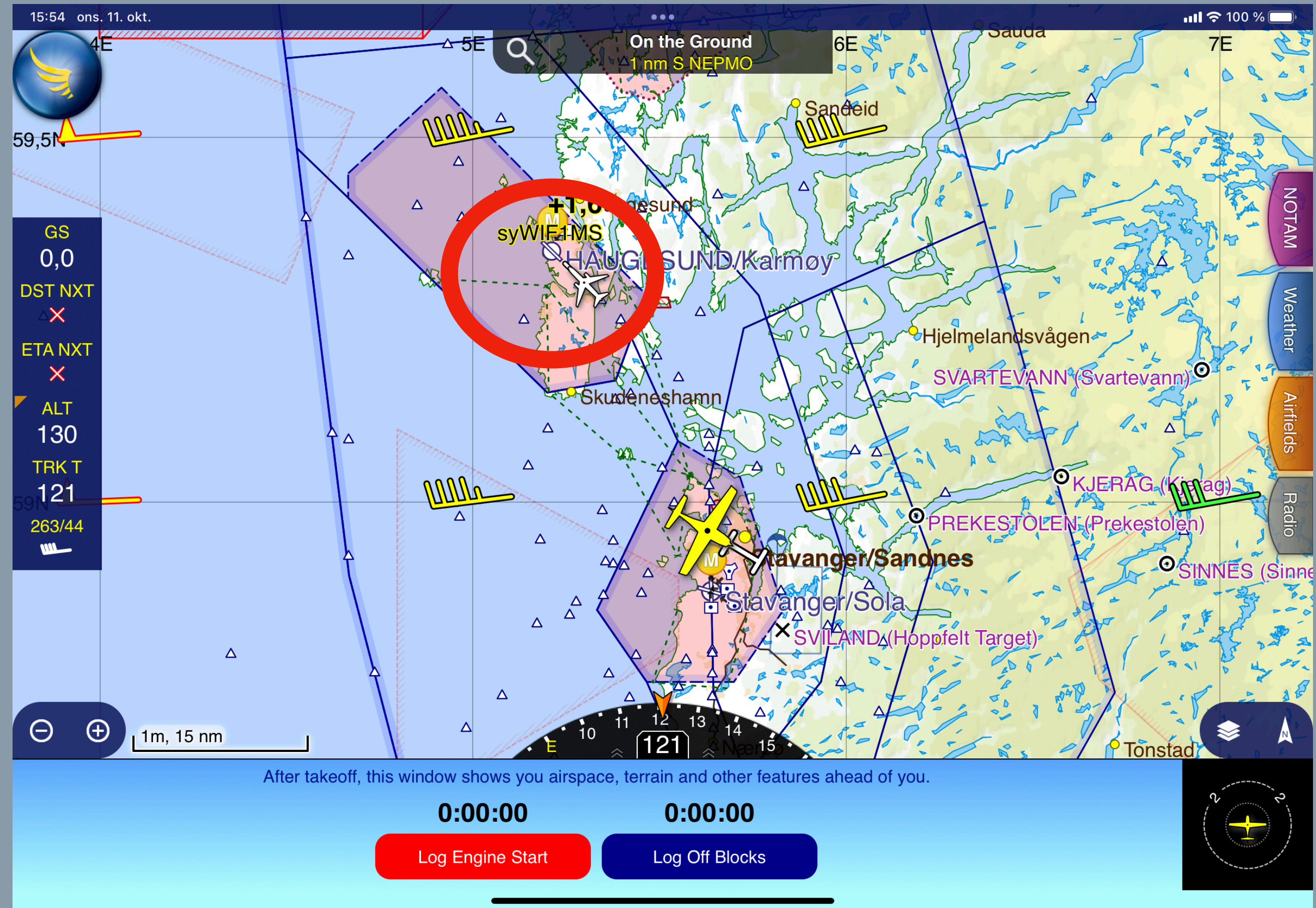
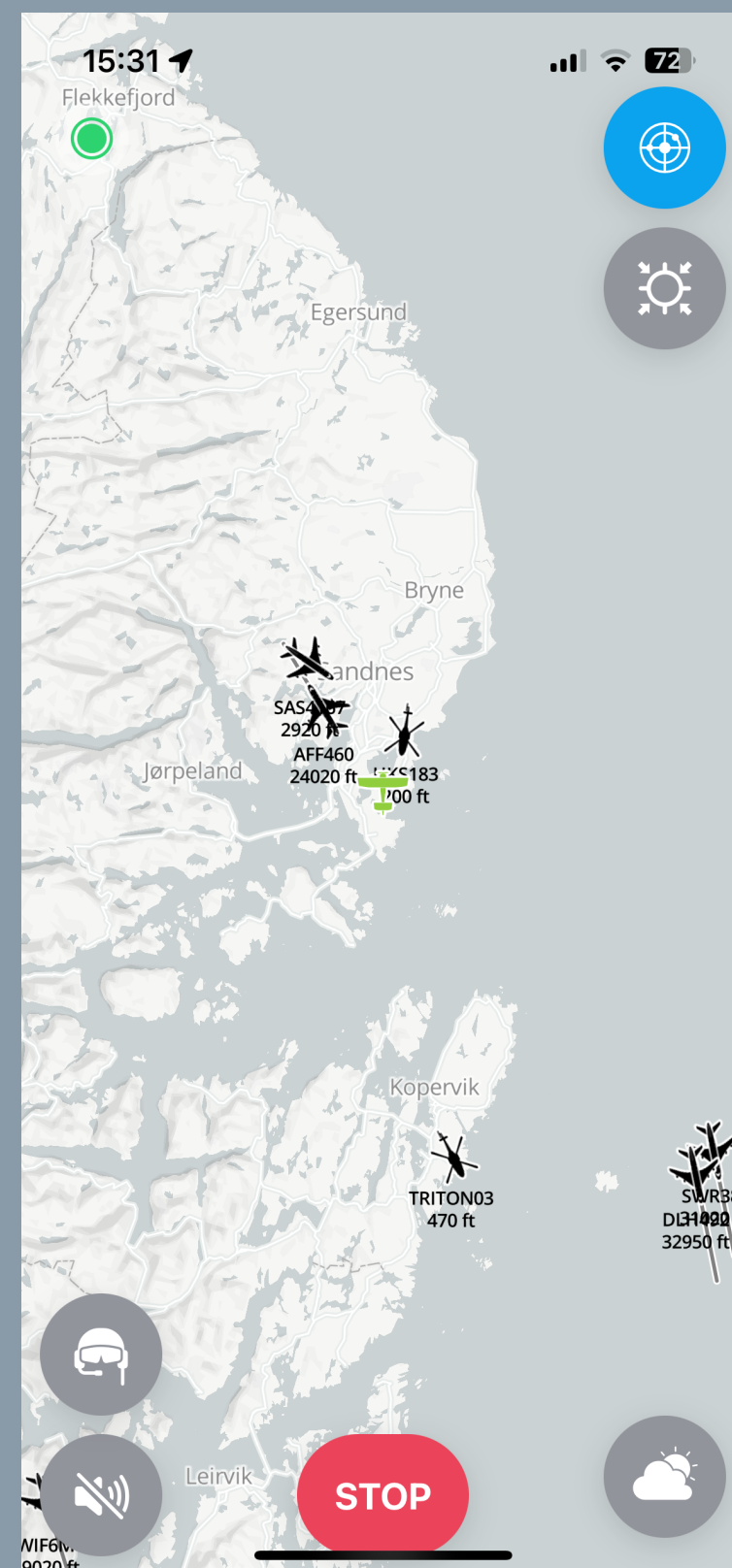
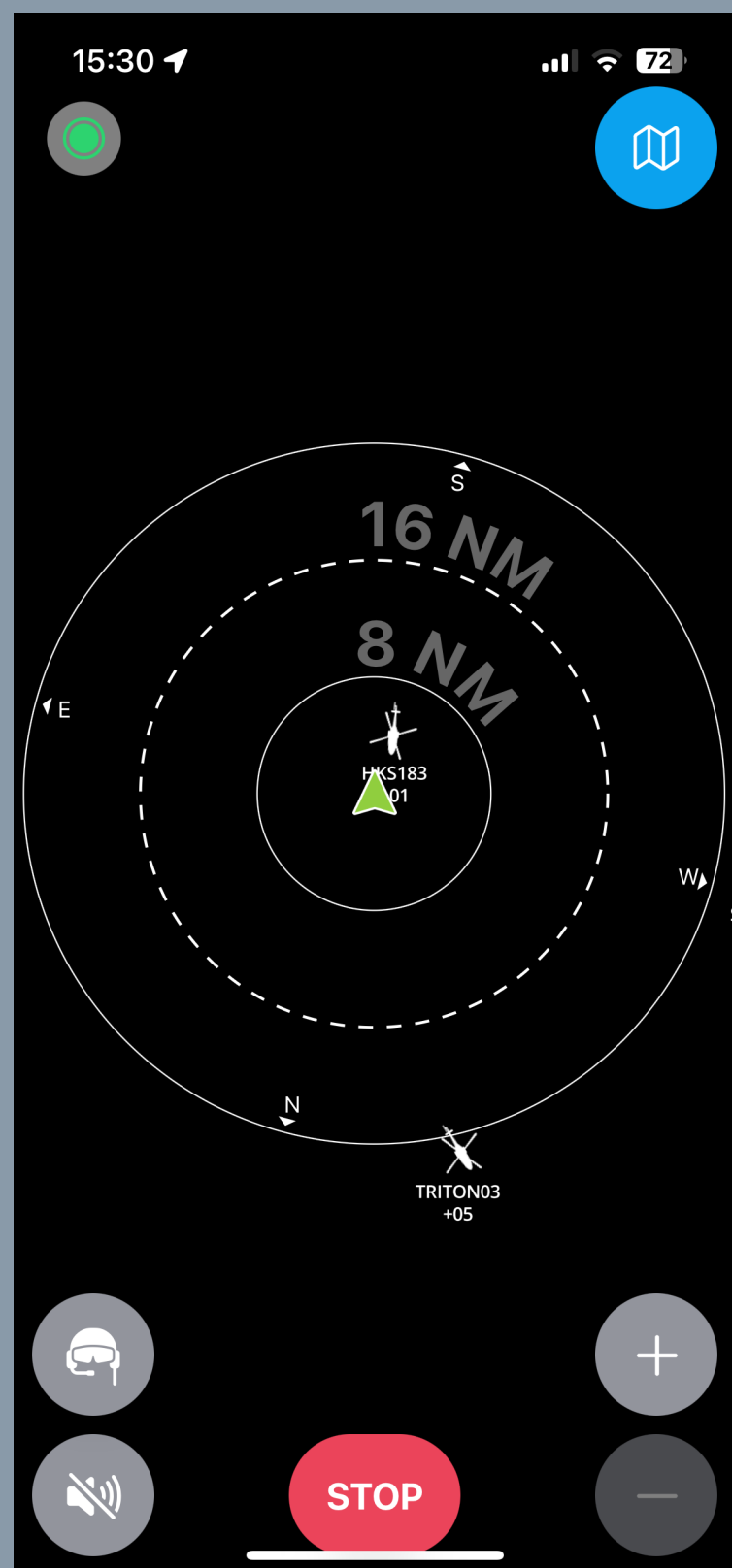
SafeSky støtter følgende applikasjoner:

- SkyDemon
- ForeFlight
- EasyVFR
- SDVFR
- Air Navigation Pro
- Sky-Map
- og andre GDL90 compatible applikasjoner

SafeSky støtter og viser også data fra følgende enheter

- SkyEcho
- Stratux
- SkyTRAXX
- PowerFlarm
- med flere

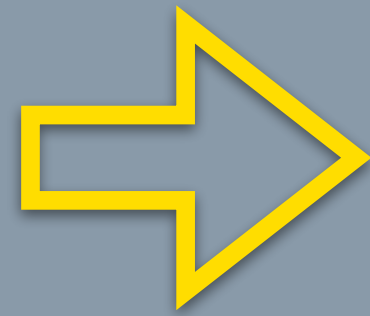
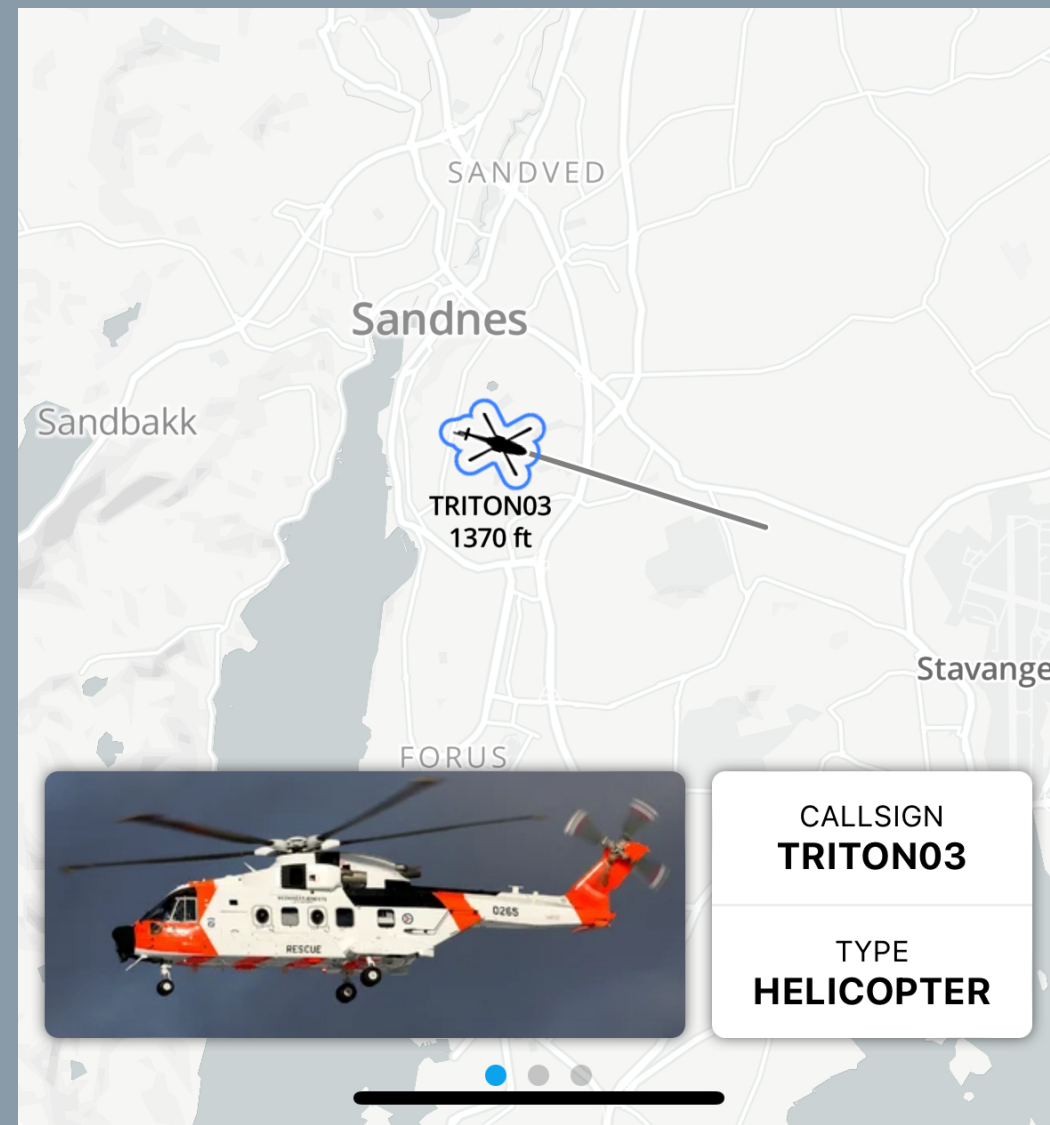
# Visuelt



# Delt presentasjon



# Detaljert informasjon




### Plane details

CALLSIGN <b>TRITON03</b>	LATITUDE <b>58°51'36"</b>	COURSE <b>286°</b>
TYPE <b>HELICOPTER</b>	LONGITUDE <b>5°44'52"</b>	
TURN RATE <b>0</b>	<b>99 kt</b>	
VERT. RATE <b>0</b>	<b>1,500 ft</b>	
ENZV STAVANGER, NORW... UTC		ADS-B
SOURCE <b>ADSBx</b>		STATUS <b>AIRBORNE</b>
LAST UPDATE <b>Just now</b>		ACCURACY <b>0 nm</b>
AIRCRAFT ----		ALT. ACCURACY <b>0 ft</b>
HAS RADIO		TRANSPONDER
AIRLINE ----	PERSON ON BOARD <b>0</b>	

# Konfigurasjon

< Back



**Avi8 (Erlend Svanes)**  
s5pg2fkvkb@privaterelay.appleid.com  
Norway

21 Sessions    15 hours Flying time    1,256nm Distance

Nickname  
Avi8

First name  
Erlend

< Back

## My aircraft

ADS-B  
Motor Plane  
PIPER Arrow 3  
LN-NPR

ADS-B  
Motor Plane  
CESSNA 172 Skyhawk  
LN-MTX

Motor Plane  
CESSNA 172 Skyhawk  
LN-FTD

< Back    My fellow pilots

Filter pilots...

**7 Pilots**

- Harald Hagen**  
On the ground
- konkrog** (knut rogde)  
On the ground
- MatMc** (Mathieu McGuire)  
On the ground
- NPR** (Rune Hansen)  
On the ground
- Roger Aure**  
On the ground
- Steffen** (Steffen Evertsen)  
On the ground
- Steinr** (Stein Roald Levang)  
On the ground

**Sent invitations 1**

< Back

## Flight logs

16 SEPTEMBER 2023  
13:02 → 14:27

96nm    92kt    740ft    5

4 SEPTEMBER 2023  
08:20 → 09:52  
LN-NPR    MOTOR PLANE

153nm    100kt    4,990ft    3

12 JUNE 2023  
18:44 → 18:45  
LN-NPR    MOTOR PLANE

0nm    86kt    3,070ft    0

## Kostnader



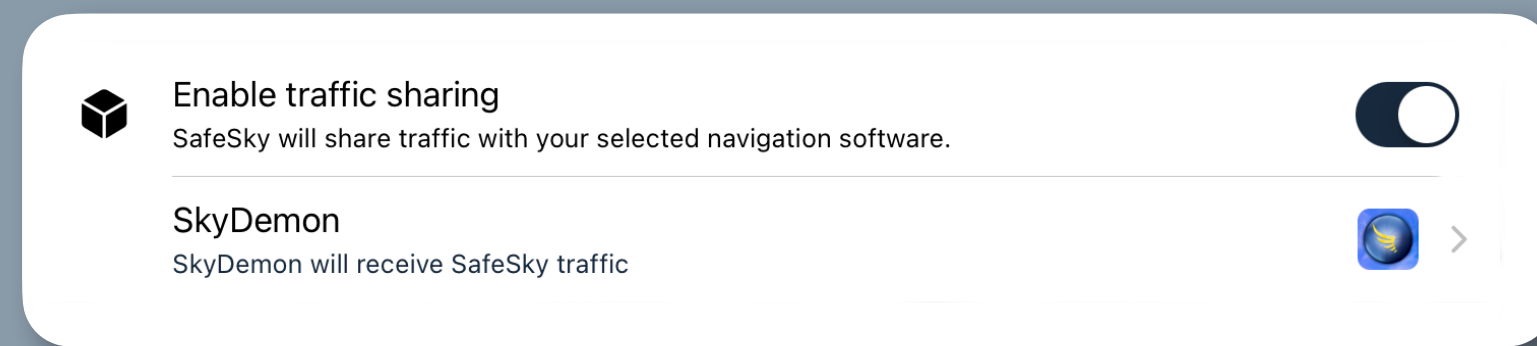
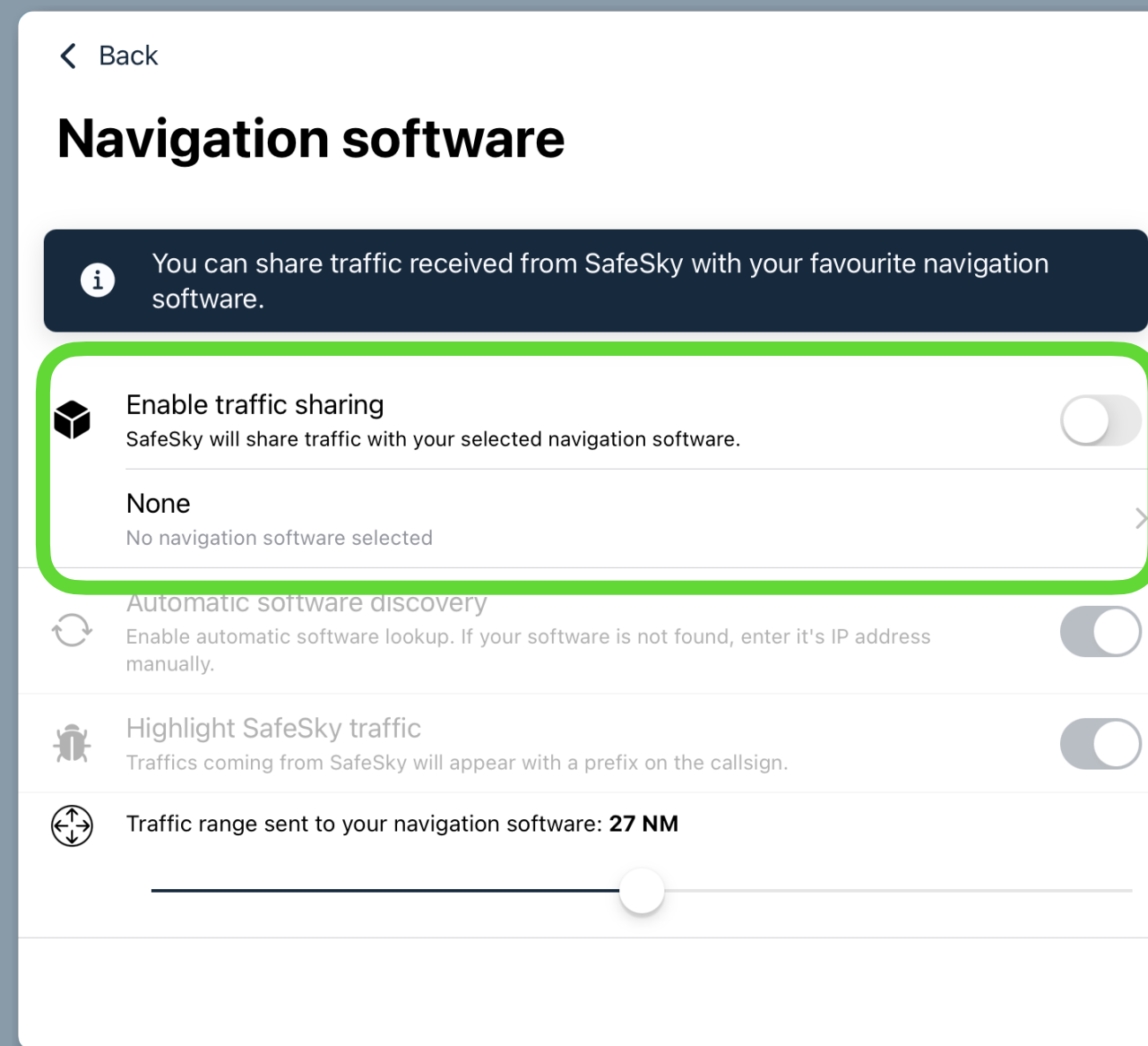
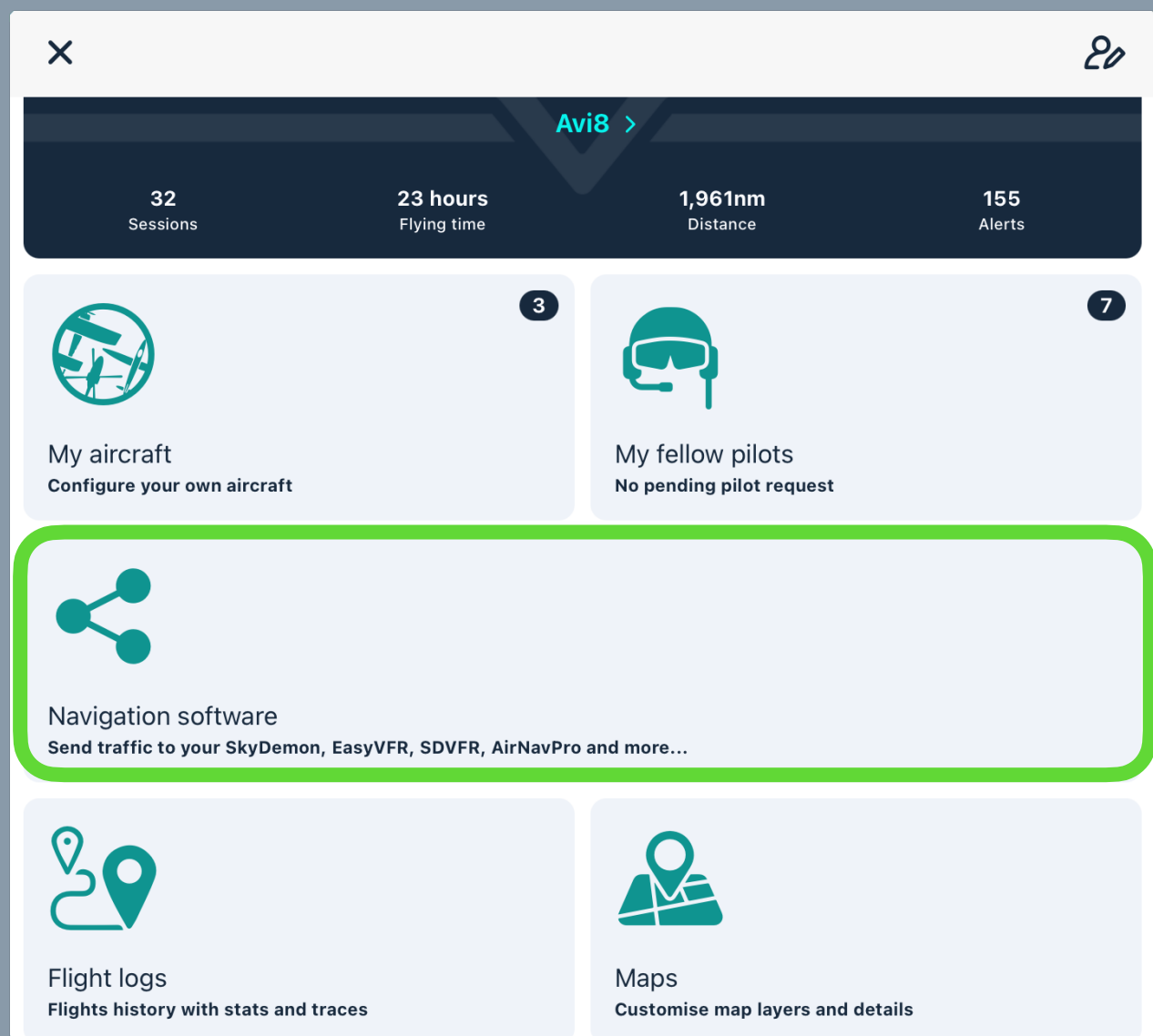
SafeSky

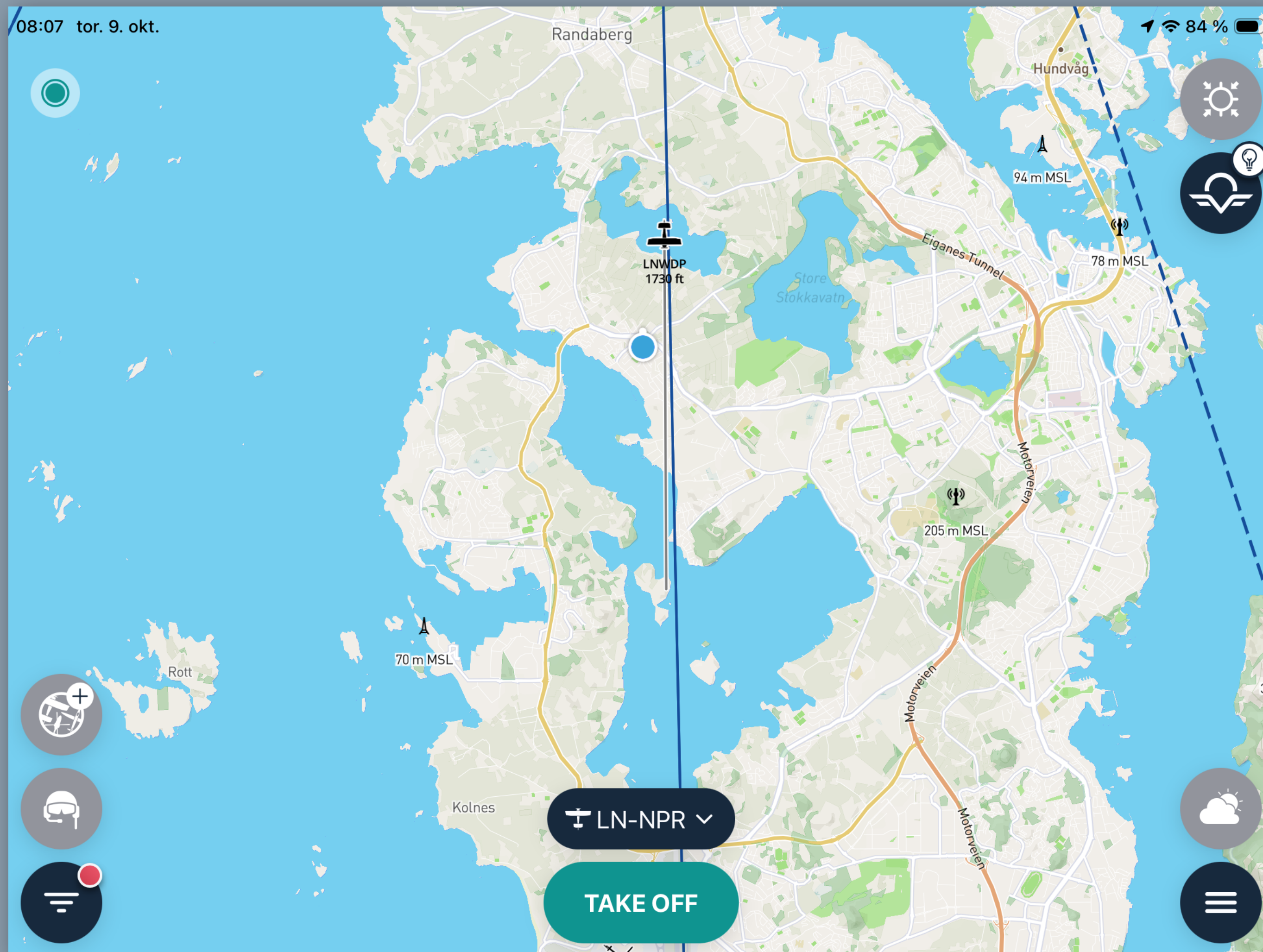
Gratis å bruke appen, men det kreves Premium abonnement for integrasjon mot andre system.  
Pr. oktober 2025 er prisen for Premium abonnement Kr 299,-

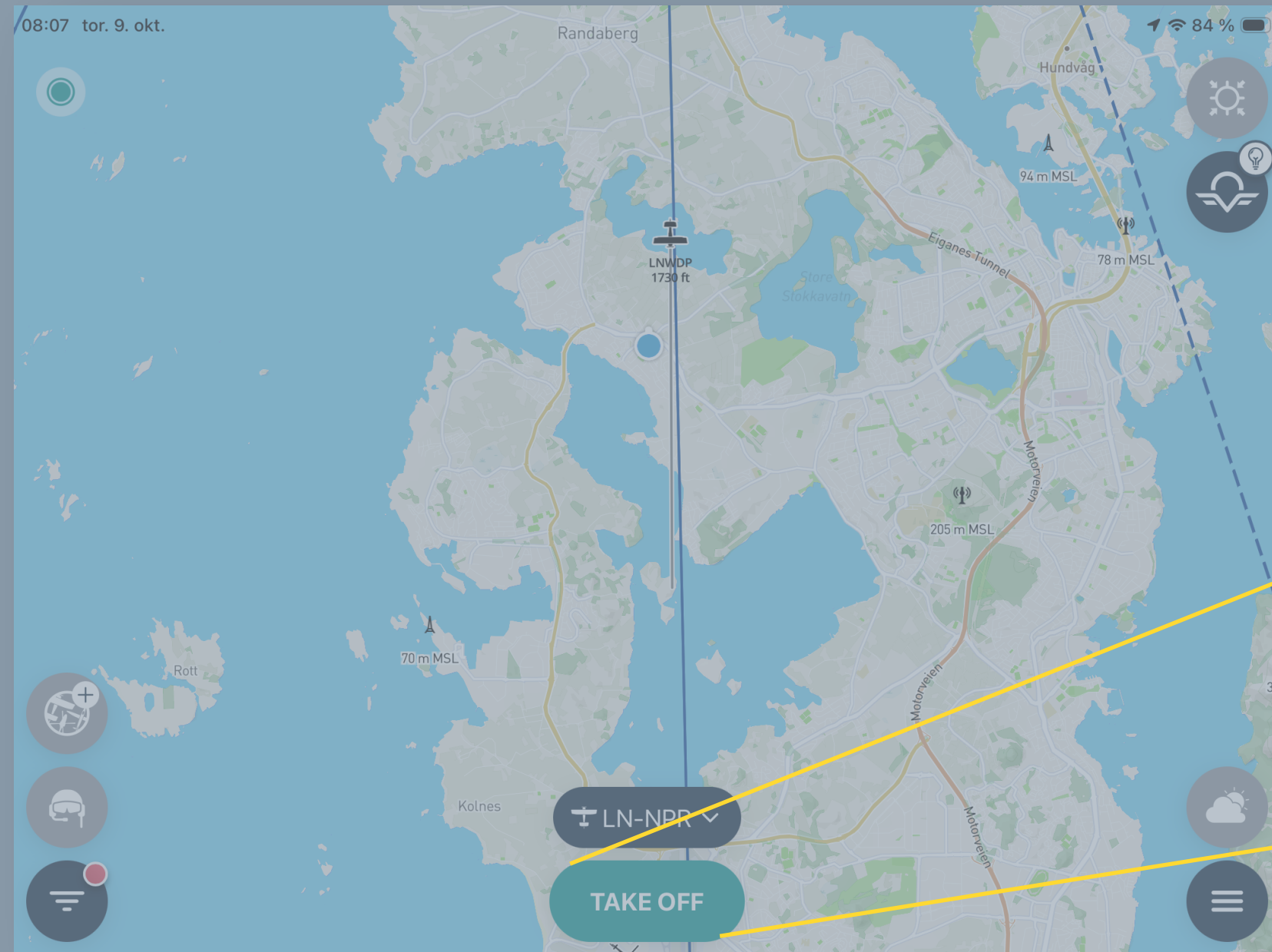


# Integrer SafeSky i SkyDemon

## Konfigurer SafeSky





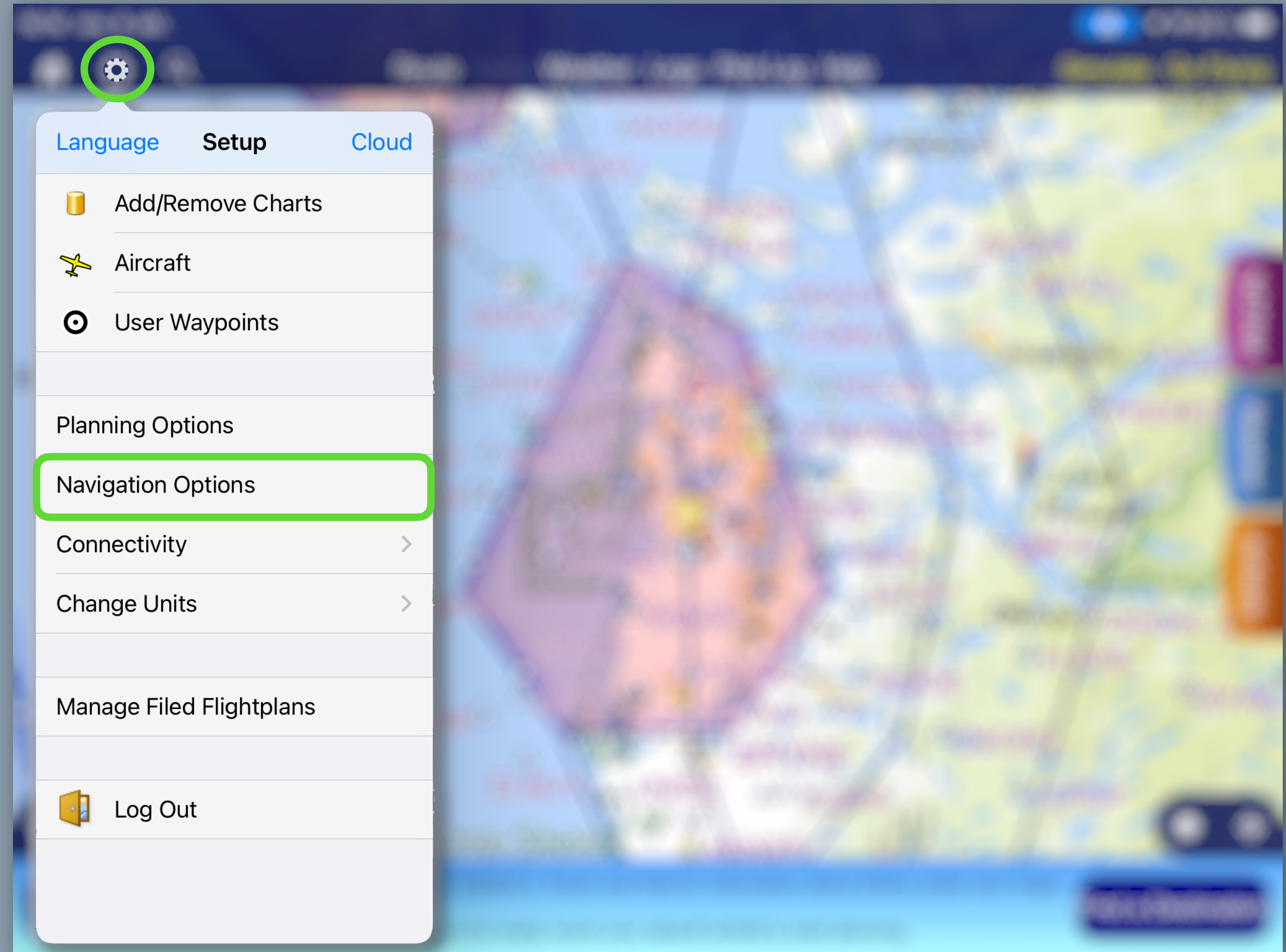


TAKE OFF

SkyDemon

# Integrer SafeSky i SkyDemon

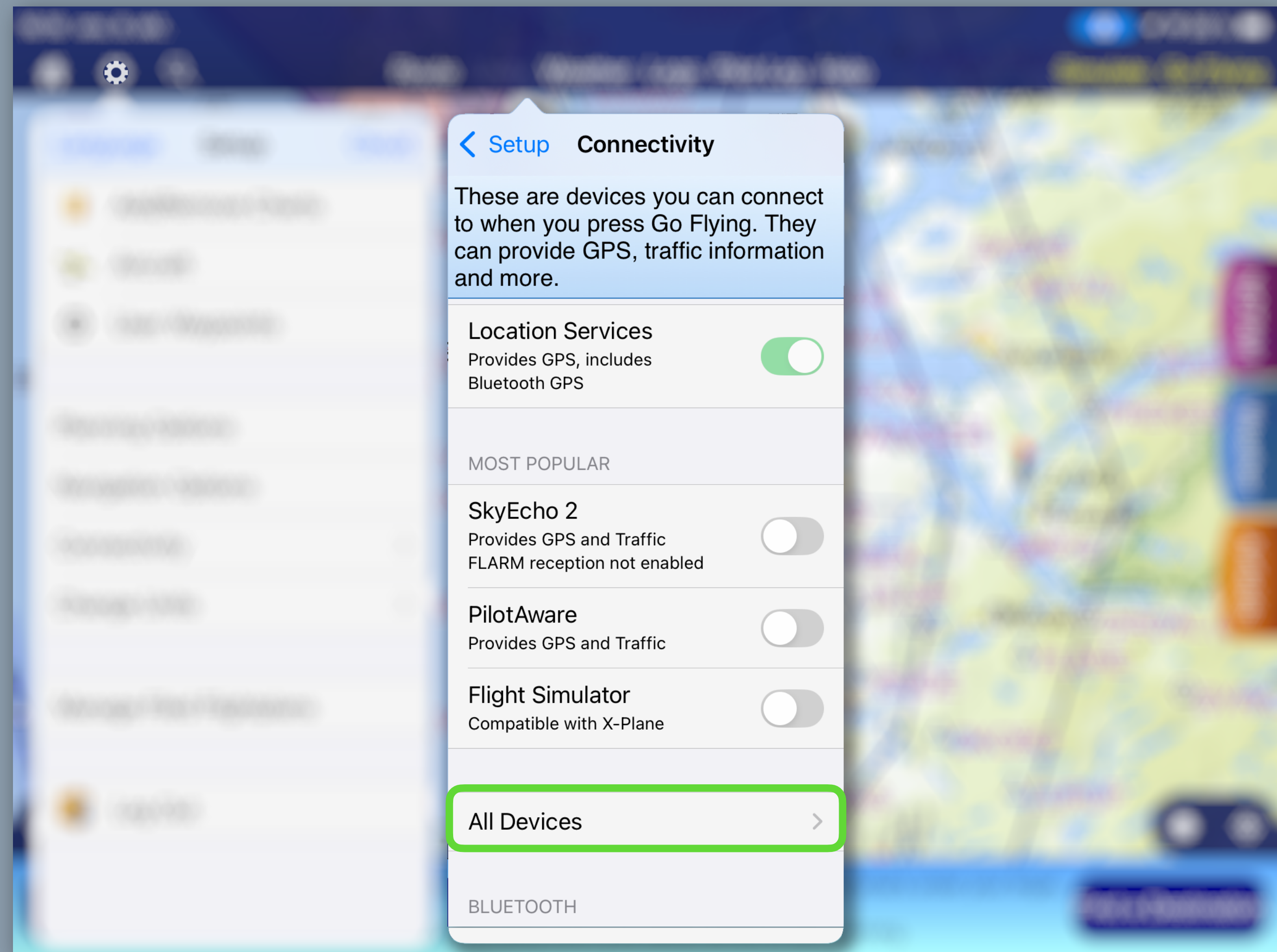
Konfigurer SkyDemon



SkyDemon

# Integrer SafeSky i SkyDemon

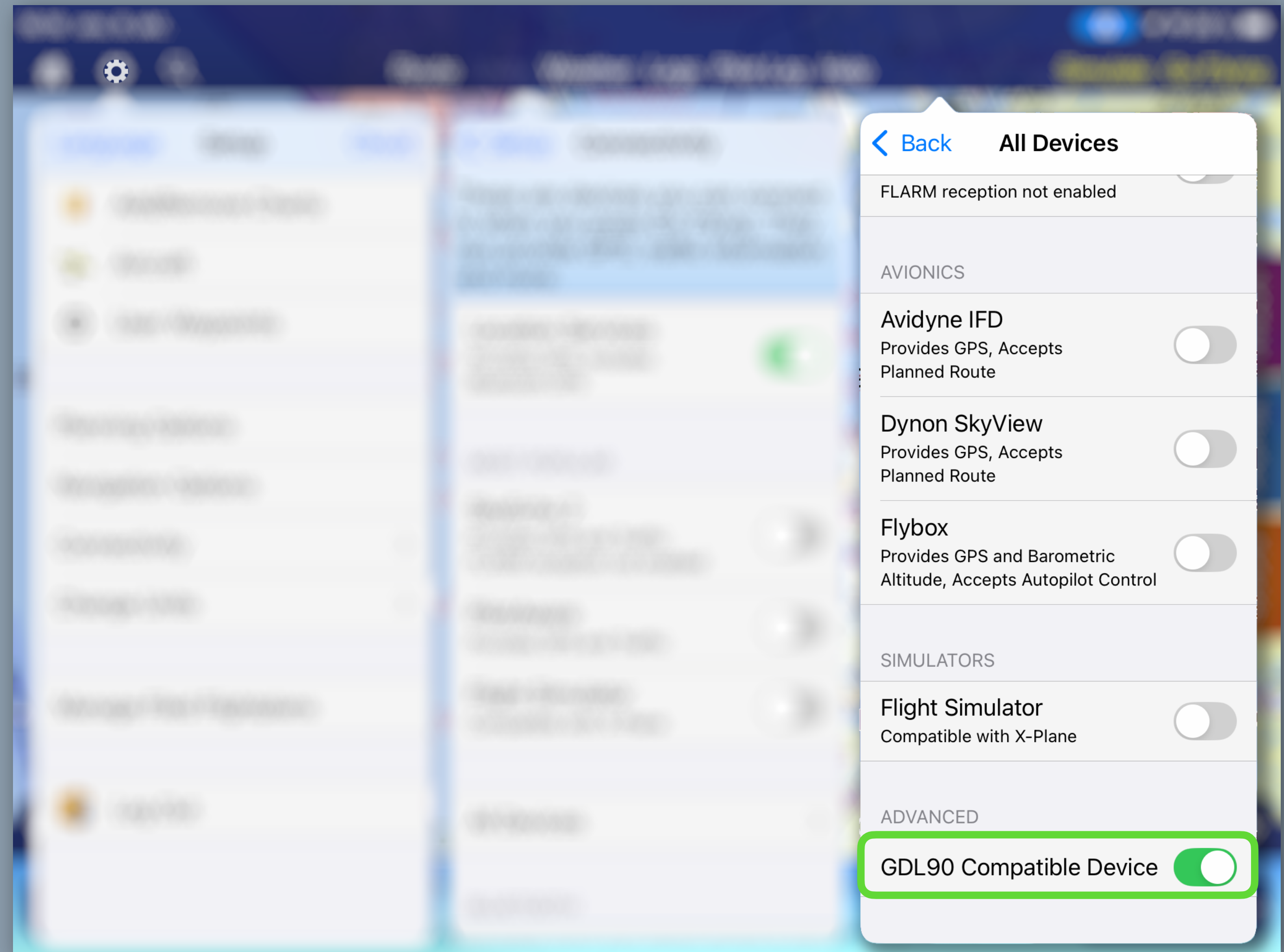
## Konfigurer SkyDemon





# Integrer SafeSky i SkyDemon

## Konfigurer SkyDemon



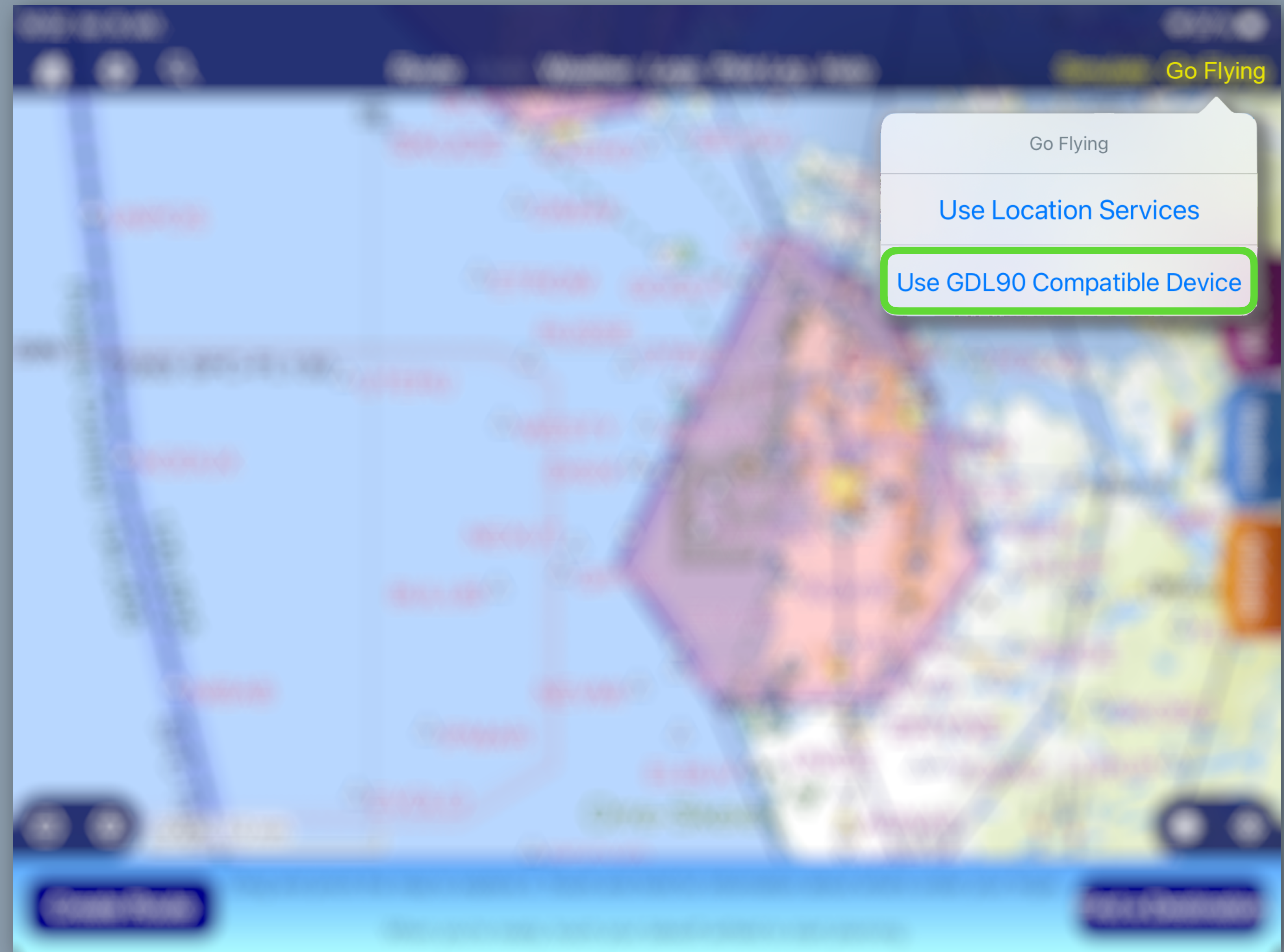


## Integrer SafeSky i SkyDemon

Konfigurer SkyDemon

GarminDataLink 90 protocol inkluderer:

- GPS posisjonsdata
- ADS-B vær og trafikinformasjon
- høyde og hastighet
- identifikasjon



SkyDemon

# Integrer SafeSky i SkyDemon

Integrasjon i bruk

The screenshot displays the SkyDemon mobile application interface. At the top, the status bar shows the time 16:19, date 'ons. 8. okt.', and battery level at 89%. The main map area shows a flight path over Norway, with various airports and navigation points labeled in pink, such as BOKN WEST, SKUDF, BEVGU, ETROM, GOGUT, RUSSE, OTBIG, KUTJA, WESTY, AMRUN, DISIX, NEXUT, GIPKO, BULUB, NEVMI, ESCAB, FANGO, ERUVO, TUXAS, and LURUP. A prominent green notification box in the center reads 'Waiting for Device'. On the left side, a vertical menu lists several data fields with red 'X' marks indicating they are disabled: GS, DST NXT, ETA NXT, ALT, TRK T, and WIND. On the right side, there are buttons for 'NOTAM', 'Weather', 'Airfields', and 'Radio'. At the bottom, there are two timers set to '0:00:00' and two buttons: 'Log Engine Start' (red) and 'Log Off Blocks' (dark blue). A scale bar at the bottom left indicates '500k, 10 nm'. The text 'After takeoff, this window shows you airspace, terrain and other features ahead of you.' is visible at the bottom of the map area.

SkyDemon

# Integrer SafeSky i SkyDemon

Integrasjon i bruk

16:21 ons. 8. okt. 89%

On the Ground  
1 nm S NEPMO (ENZV Stav)

GS 0,0  
DST NXT X  
ETA NXT X  
ALT 130  
TRK T 139  
WIND X

500k, 10 nm

0:00:00 0:00:00  
Log Engine Start Log Off Blocks

NOTAM  
Weather  
Airfields  
Radio

syNOR216 +1,9  
syHWA124 +0,4

After takeoff, this window shows you airspace, terrain and other features



# SafeSky

Nytt i versjon 3.0.29  
Aug - 2025

- 1. New SmartRadar view
- 2. Manage nearby aircraft alerts
- 3. Weather ahead!
- 4. Map and AIP (Aeronautical Information Publication)
- 5. Enhanced interface
- 6. Stability and bug fixes

Proximity weather - METAR

Connection status

Radar zoom +

My position

Radar zoom -

Cancel alert(s)

Activate MAYDAY (SAR)

Change aircraft

Modify background color

Radar + AIP

Go to Map view

Vertical radar

Settings radar view

Stop the current flight

# SkyDemon

## Version 4.0.2, 30 Jan 2025

- Support added for sending frequencies to Becker AR620x radios via Bluetooth-to-RS232 (iOS, Android)

## Version 4.1.0, 8 Jun 2025

- Aircraft creation wizard makes it much easier to create aircraft profiles (iOS, Android)
- When using the Find tool in flight, you can now select Waypoints Ahead to see a list of all waypoints coming up (iOS, Android)  
*This is really useful when ATC ask you to report by, or route via, a waypoint that you've never heard of and whose spelling is not obvious.*
- It is now possible to add reminders that display at or before turning points in your route as you fly (iOS, Android)
- Warnings are now suppressed for danger or restricted areas activated by NOTAM or AUP, when no such activation is known (iOS, Android, PC)  
*This benefits customers flying in regions where it is commonplace to fly through danger or restricted areas that are not active, and for whom a warning about such areas is undesirable. The warning is only suppressed if NOTAM and AUP data is up-to-date.*
- SkyDemon is now translated into Spanish (iOS, Android)
- Callsigns are now shown for other aircraft when connected to a compatible PowerFLARM receiver (iOS, Android, PC)
- The DataCreator application now requires .net 9 to be installed (PC)

# SkyDemon

## Version 4.1.2, 29 Jul 2025

- Minor fixes.

## Version 4.1.1, 2 Jul 2025

- Various fixes to minor stability issues encountered by a few users (iOS, Android, PC)

## Version 4.2.0, 8 Oct 2025






- Checklists have been introduced for aircraft profiles (iOS, Android)  
*Checklists can be defined for each aircraft profile, copied between aircraft, and are accessible from the Airfields tab and by tapping your aircraft symbol in flight.*
- Pilot Log redesigned, and optional Airspace Above and Minimum Fuel columns added (iOS, Android, PC)  
*There is now an option to move the frequencies section to a new page. Airspace Above gives you a ceiling to fly below based on the next controlled or dangerous airspace above you, and Minimum Fuel indicates how much fuel you need to have left at each turning point.*
- Approach Information and Admin Information screens redesigned to be more clear (iOS, Android, PC)  
*Density Altitude calculation is now available for more airfields.*
- Trip Overview has been introduced for multi-sector trips (iOS, Android, PC)  
*This new screen is accessible from the Route menu when you have a multi-sector trip planned, and gives totals for distances, times and fuel, as well as helping you to plan fuel stops.*

# SkyDemon

## Sjekklister

< Aircraft PA28R-201

Name PA28R-201

Registration LN-NPR

Default Level 5 000 ft

Fuel >

Weight and Balance >

Checklists >

- NOTAM
- Weather
- Airfields
- Radio

# SkyDemon

## Sjekklister

< Aircraft PA28R-201

Name PA28R-201

Registration LN-NPR

Default Level 5 000 ft

Fuel >

Weight and Balance >

Checklists >

< Back Edit Checklist

Starting Engine When COLD Edit

Throttle ..... 1/2" open Edit

Master switch ..... On Edit

Electric Fuel Pump ..... On Edit

Mixture ..... Prime, then idle cut-off Edit

Starter ..... Engage Edit

Mixture ..... Full rich Edit

Throttle ..... Adjust (1000 rpm) Edit

NOTAM

Weather

Airfields

Radio

# SkyDemon

## Sjekkliste

← Aircraft PA28R-201

← Back Edit Checklist

Starting Engine When COLD Edit

Name	Throttle PA28R-201	1/2" open	↓	Edit	🗑️
	Master switch	On	↑ ↓	Edit	🗑️
Registration	Electric Fuel Pump	On	↑ ↓	Edit	🗑️
Default Level	Mixture	Prime, then idle cut-off	↑ ↓	Edit	🗑️
Fuel	Starter	Engage	↑ ↓	Edit	🗑️
Weight and Balance	Mixture	Full rich	↑ ↓	Edit	🗑️
Checklists	Throttle	Adjust (1000 rpm)	↑ ↓	Edit	🗑️

Airfields Find

All Countries My Flight Guides

User Documents Checklists

★ Find a Destination

My Flightplan

There are currently no airfields of interest. When you have planned a route, all enroute airfields will be shown in this list automatically.

Create Route

70%

← Back Start Prev Next

Before Start

Parking Brake Set

Propeller Full INCREASE rpm

Fuel Selector Desired tank

Beacon On

Starting Engine When COLD

Throttle 1/2" open

Master switch On

Electric Fuel Pump On

Mixture Prime, then idle cut-off

Starter Engage

Mixture Full rich

Throttle Adjust (1000 rpm)

Oil pressure Check

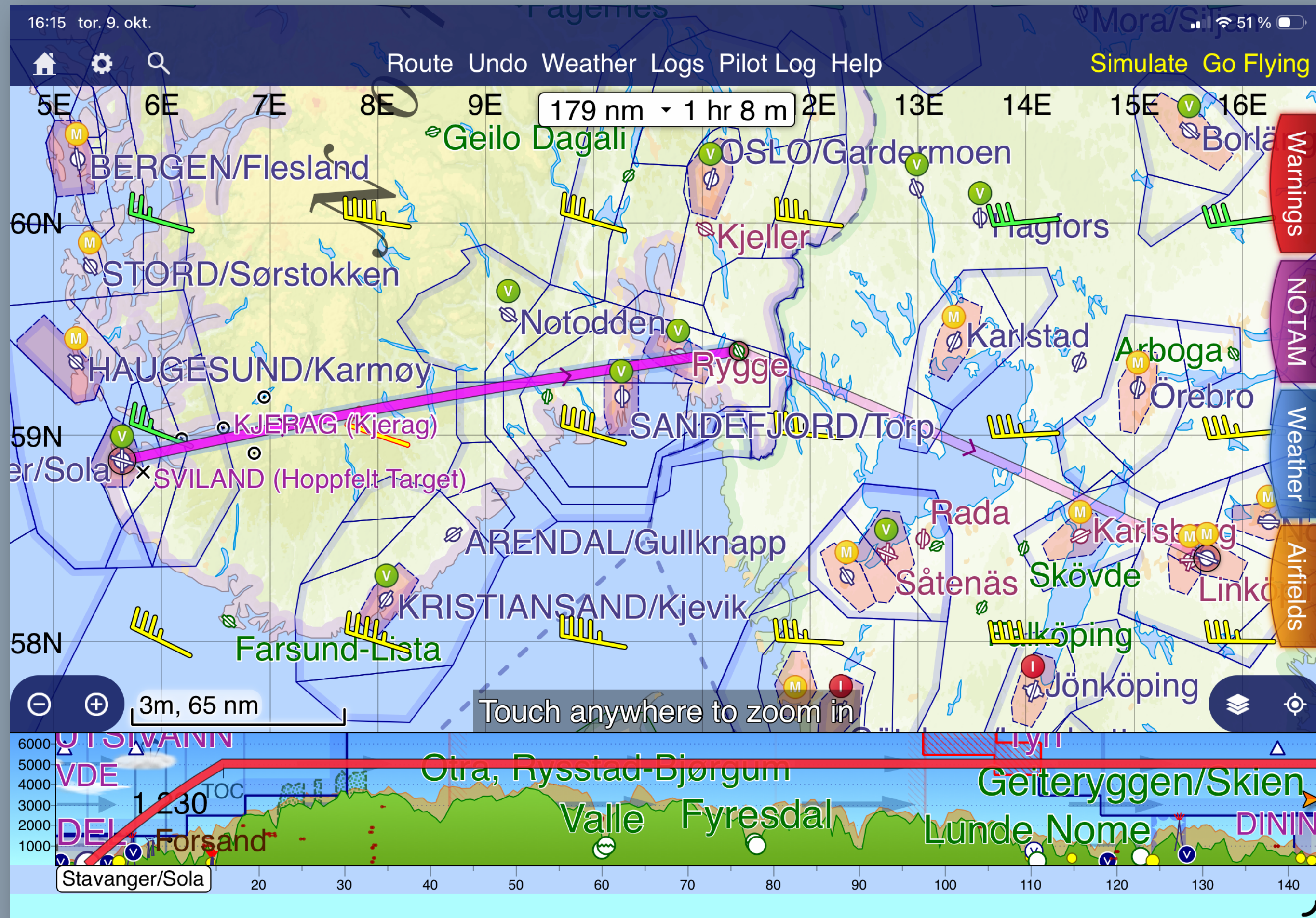
Starting Engine When HOT

Throttle 1/2" open

- NOTAM
- Weather
- Airfields
- Radio

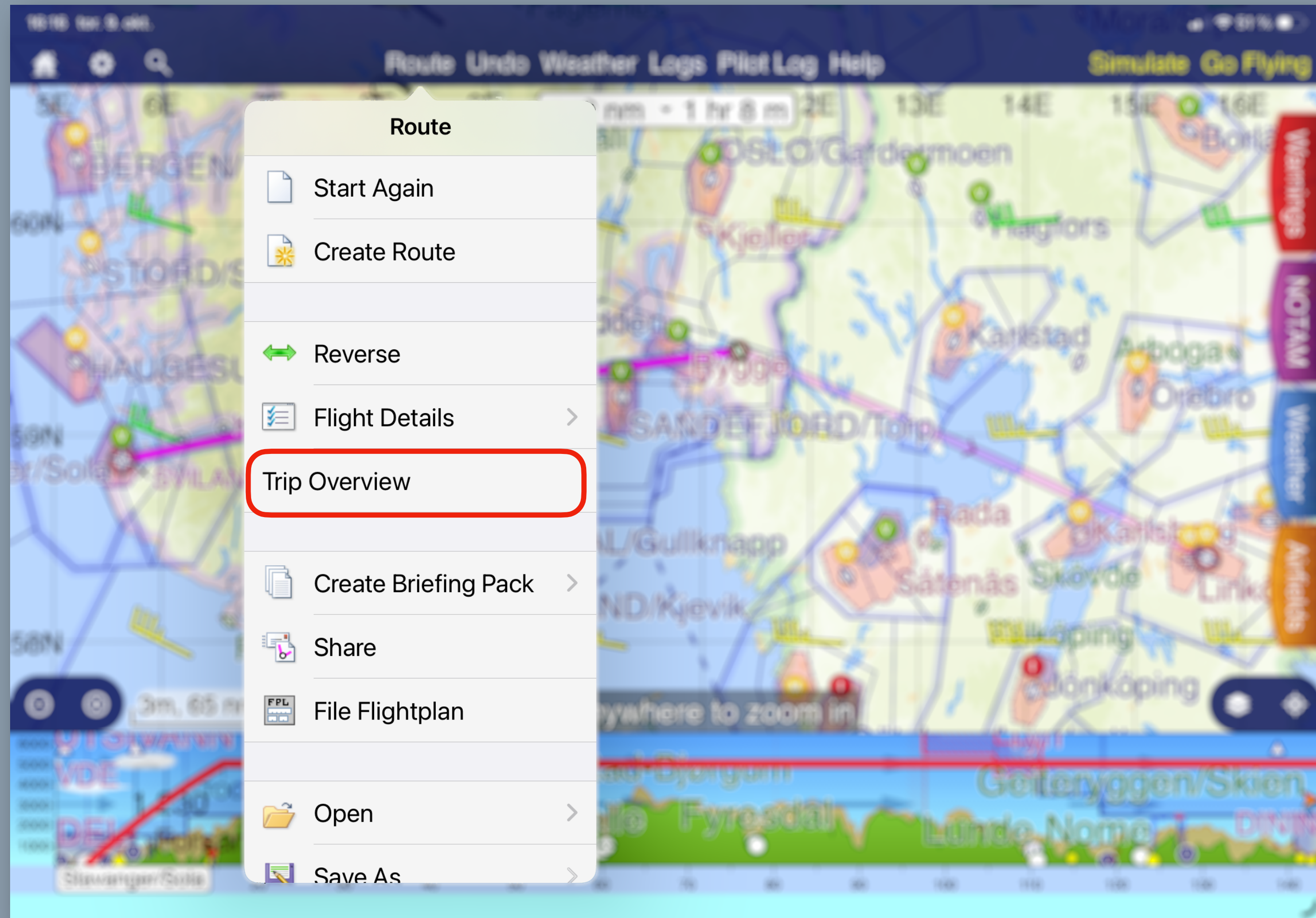
# SkyDemon

Multi sector



# SkyDemon

Multi sector



# SkyDemon

## Multi sector

16:15 tor. 9. okt.
51%

← Back
Stavanger/Sola - Rakkestad Åstorp

Aircraft	Distance	Time	Fuel Burn
LN-NPR (P28R)	326 nm	2 hr 4 m	104,5 ltr

**Stavanger/Sola - Rakkestad Åstorp**

Fuel Required	Planned Fuel	Fuel Burn
88,2 ltr	190,0 ltr	56,1 ltr

Go to Flight
Fuel Plan

SR 06:00 Z, MCT 05:20 Z	Trk	Wind	GS	Dist	Time	FuelR
✈ ENZV Stavanger/Sola 30 ft (1 hPa)	°t		kt	nm		ltr
✈ ENRK Rakkestad Åstorp 400 ft (15 hPa)	077	289/53	157	179	68	138,9
SS 16:23 Z, ECT 17:04 Z				179	1:08	133,9

You need to add around 57,0 ltr of fuel at this location so 190,0 ltr is available for the next flight.

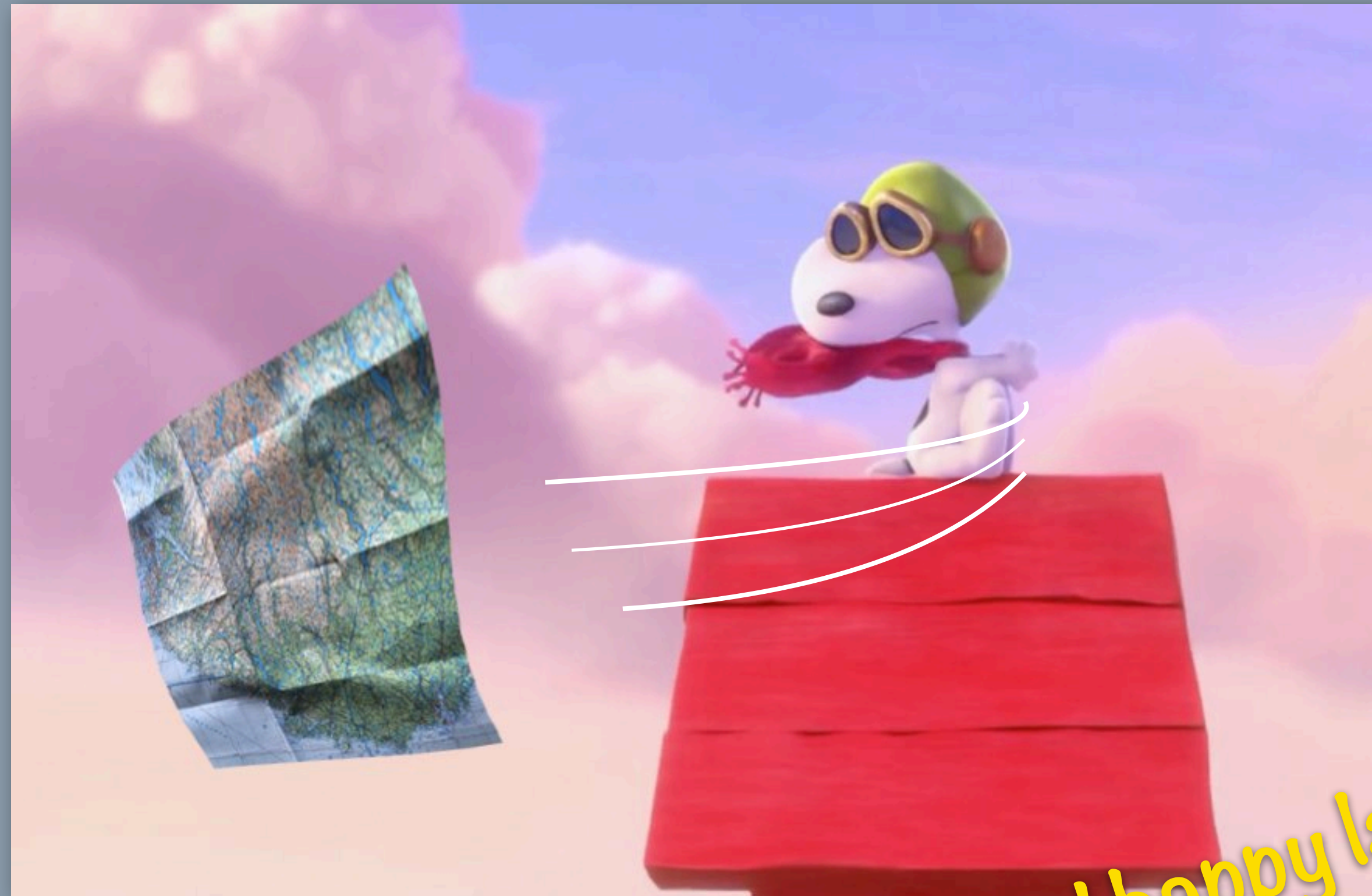
**Rakkestad Åstorp - Linköping/Saab**

Fuel Required	Planned Fuel	Fuel Burn
80,2 ltr	190,0 ltr	48,4 ltr

Go to Flight
Fuel Plan
Use Remaining Fuel

SR 05:38 Z, MCT 04:57 Z	Trk	Wind	GS	Dist	Time	FuelR
✈ ENRK Rakkestad Åstorp 400 ft (15 hPa)	°t		kt	nm		ltr
✈ ESSL Linköping/Saab 178 ft (7 hPa)	112	267/42	156	147	57	146,6
SS 16:08 Z, ECT 16:47 Z				147	57	141,6

- NOTAM
- Weather
- Airfields
- Radio



Fly safe, and happy landings!